

# How good are **Mamiya**<sup>®</sup> Lenses

## A Comparison with Carl Zeiss<sup>™</sup> Lenses\*

\*Contax Distagon T<sup>™</sup>, Planar T<sup>™</sup> and SonnarT<sup>™</sup> lenses

The fact that many of America's top professional photographers prefer Mamiya cameras with their world-class Mamiya Lenses, is perhaps the best testimonial to Mamiya lens quality. As the old saying goes, "The proof of the pudding is in the eating"; the proof of lenses is the image quality they produce.

### **Popular Photography Magazine's Test Reports**

Now we have the good fortune to prove what we are saying, because this leading magazine tested both Carl Zeiss<sup>™</sup> lenses for the Contax<sup>™</sup> 645 and Mamiya Lenses for the Mamiya 645AF, and published the results in the November '99 and April '00 issues, respectively. (Reprinted with their permission)

The following concluding paragraph says it all:

**"Conclusion:** All the Mamiya AF lenses performed outstandingly, on a par with or better than other medium-format autofocus lenses we've tested. Mamiya has placed the AF motor in the camera body, which keeps down the weight and cost of the lenses – a smart move, we think. Overall handling was nice (no aperture rings!), switching between manual and autofocus was easy, and most important, our pictures were very sharp. Pricing is moderate for the category, falling between the relatively low-cost Pentax lenses and the more expensive Contax 645 AF optics."

**Please note:** Of the nine lenses presently available for the Mamiya 645AF and the lenses presently available for the Contax 645, only three lenses of identical focal length have been tested by Popular Photography and are compared in this report.

These comparisons could leave the impression that we attach an inferior label to a worthy competitor. That's not the intention. We just want to provide you with the facts.

# Popular Photography® Magazine Lens Testing Results

The numbers below indicate resolution in Lines/mm at center and corners of image.

Mamiya lens resolution results below are taken from the April 2000 issue of Popular Photography.

Contax lens resolution results below are taken from the November 1999 issue of Popular Photography.

## Mamiya 645 AF 45mm f/2.8 & Contax Distagon T\* 45mm f/2.8

f-stop	Resolution at center				Resolution at corners			
	Mamiya		Contax		Mamiya		Contax	
2.8	<i>excellent</i>	<b>50</b>	<i>excellent</i>	50	<i>very good</i>	<b>28</b>	<i>good</i>	24
4	<i>excellent</i>	<b>62</b>	<i>excellent</i>	70	<i>very good</i>	<b>31</b>	<i>very good</i>	31
5.6	<i>excellent</i>	<b>78</b>	<i>excellent</i>	78	<i>very good</i>	<b>35</b>	<i>good</i>	28
8	<i>excellent</i>	<b>70</b>	<i>excellent</i>	70	<i>excellent</i>	<b>39</b>	<i>very good</i>	35
11	<i>excellent</i>	<b>65</b>	<i>excellent</i>	70	<i>excellent</i>	<b>45</b>	<i>very good</i>	35
16	<i>excellent</i>	<b>62</b>	<i>excellent</i>	62	<i>excellent</i>	<b>42</b>	<i>excellent</i>	36
22	<i>excellent</i>	<b>50</b>	<i>excellent</i>	50	<i>excellent</i>	<b>39</b>	<i>very good</i>	32
32	–	–	<i>very good</i>	40	–	–	<i>good</i>	28

## Mamiya 645 AF 80mm f/2.8 & Contax Planar T\* 80mm f/2

f-stop	Resolution at center				Resolution at corners			
	Mamiya		Contax		Mamiya		Contax	
2	–	–	<i>excellent</i>	53	–	–	<i>acceptable</i>	18
2.8	<i>excellent</i>	<b>70</b>	<i>excellent</i>	53	<i>excellent</i>	<b>35</b>	<i>acceptable</i>	21
4	<i>excellent</i>	<b>78</b>	<i>excellent</i>	67	<i>excellent</i>	<b>44</b>	<i>acceptable</i>	25
5.6	<i>excellent</i>	<b>68</b>	<i>excellent</i>	84	<i>excellent</i>	<b>49</b>	<i>good</i>	28
8	<i>excellent</i>	<b>70</b>	<i>excellent</i>	75	<i>excellent</i>	<b>44</b>	<i>good</i>	33
11	<i>excellent</i>	<b>70</b>	<i>excellent</i>	67	<i>excellent</i>	<b>44</b>	<i>excellent</i>	41
16	<i>excellent</i>	<b>62</b>	<i>excellent</i>	53	<i>excellent</i>	<b>39</b>	<i>excellent</i>	40
22	<i>excellent</i>	<b>48</b>	<i>excellent</i>	53	<i>good</i>	<b>31</b>	<i>very good</i>	35

## Mamiya 645 AF 210mm f/4 IF & Contax Sonnar T\* 210mm f/4

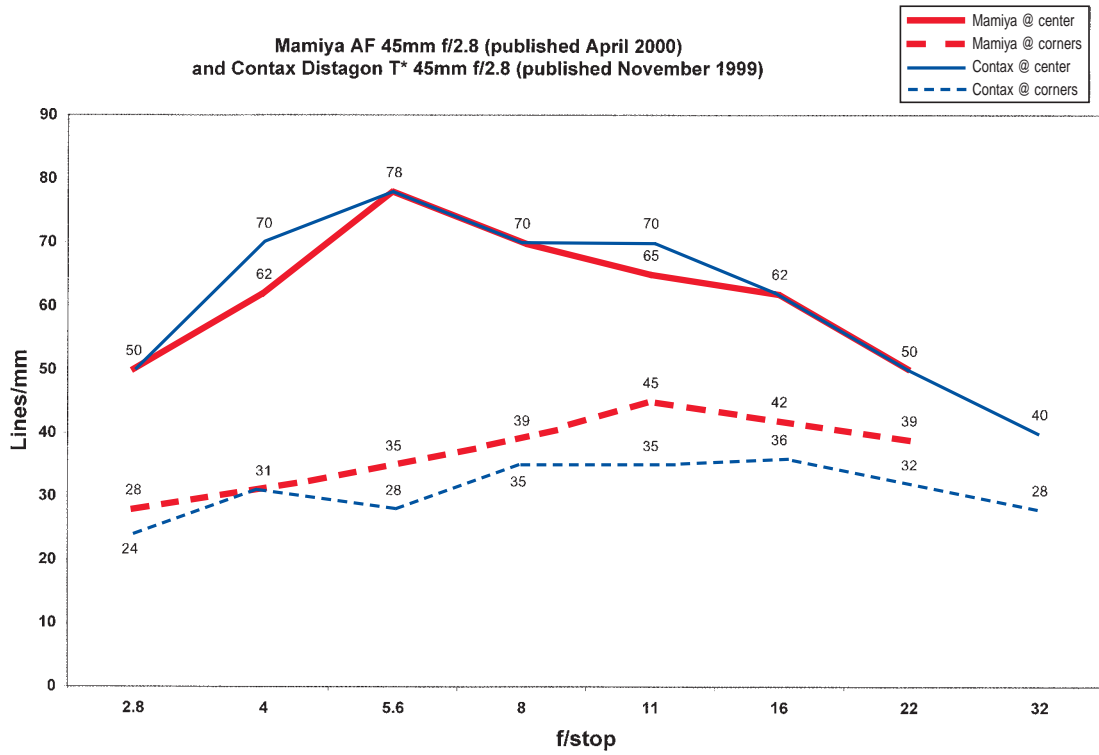
f-stop	Resolution at center				Resolution at corners			
	Mamiya		Contax		Mamiya		Contax	
4	<i>excellent</i>	<b>77</b>	<i>excellent</i>	64	<i>excellent</i>	<b>49</b>	<i>very good</i>	28
5.6	<i>excellent</i>	<b>70</b>	<i>excellent</i>	51	<i>excellent</i>	<b>49</b>	<i>excellent</i>	34
8	<i>excellent</i>	<b>69</b>	<i>excellent</i>	51	<i>excellent</i>	<b>54</b>	<i>excellent</i>	40
11	<i>excellent</i>	<b>69</b>	<i>very good</i>	45	<i>excellent</i>	<b>54</b>	<i>very good</i>	36
16	<i>excellent</i>	<b>54</b>	<i>very good</i>	40	<i>very good</i>	<b>43</b>	<i>good</i>	33
22	<i>good</i>	<b>43</b>	<i>excellent</i>	45	<i>good</i>	<b>30</b>	<i>very good</i>	36
32	<i>good</i>	<b>34</b>	<i>very good</i>	40	<i>acceptable</i>	<b>27</b>	<i>excellent</i>	38
45	–	–	<i>good</i>	36	–	–	<i>good</i>	33

\* “–” denotes that a value is not applicable.

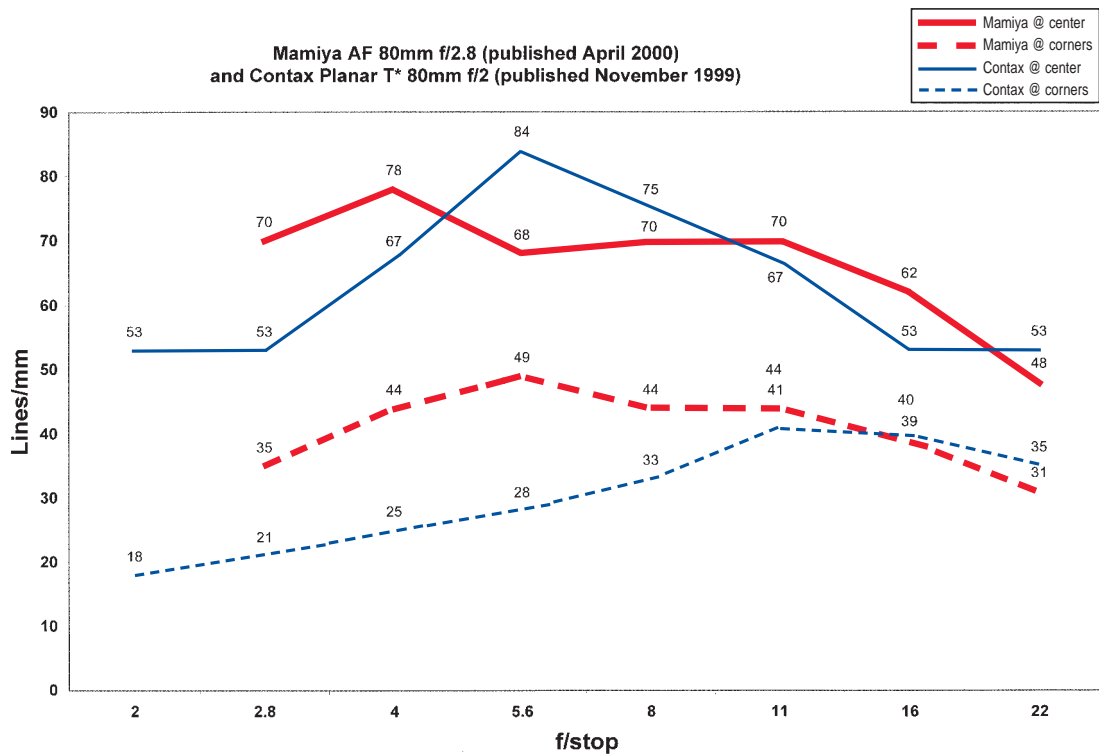
\*\* The Mamiya AF 55mm f/2.8 and AF APO 300mm f/4.5 IF lenses are not included in above comparisons.

There are no direct equivalent focal lengths in the Contax autofocus lens system.

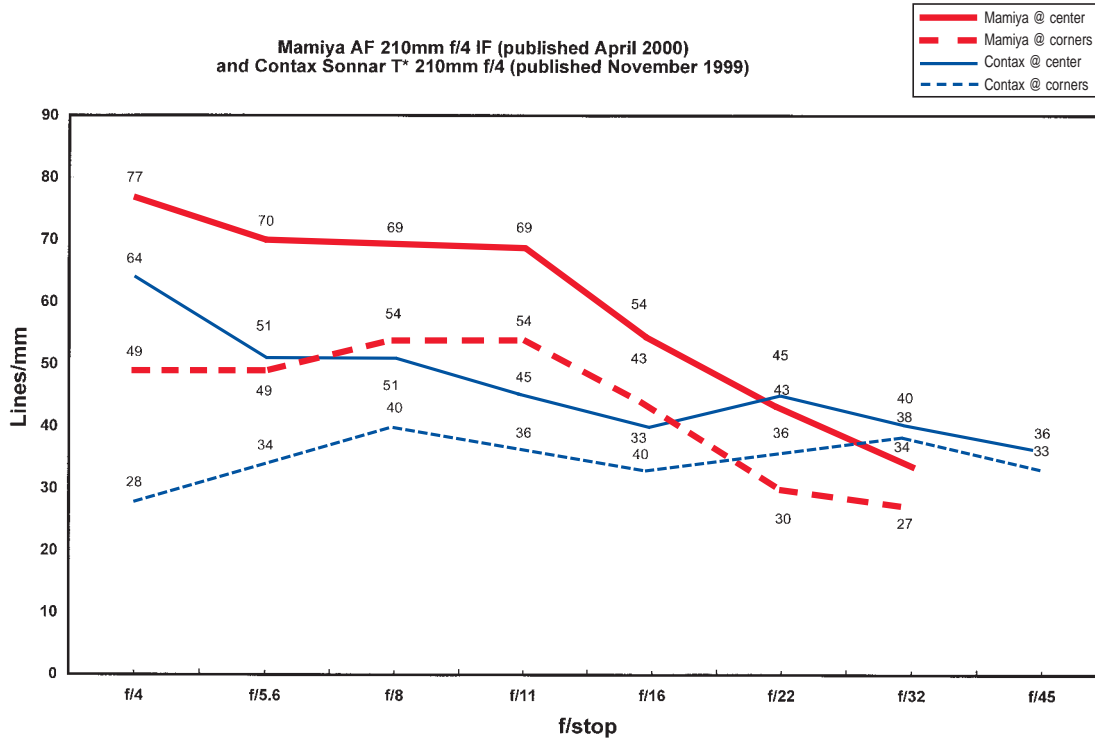
## Popular Photography Lens Resolution Tests Comparison



## Popular Photography Lens Resolution Tests Comparison



# Popular Photography Lens Resolution Tests Comparison



## Mamiya Designs and Manufactures Its Own Lenses

Mamiya has set very high performance goals for both its cameras and lenses. In order to assure this high standard is maintained for professional photographers, Mamiya designs and manufactures its own lenses, in its own factory, to its own specifications. Unlike other manufacturers of medium format cameras, Mamiya does not entrust this task to others, but rather attends to every detail in the design and manufacturing process.

Engineers at Mamiya have developed rigorous performance criteria for each lens design. No detail is overlooked. No test is omitted. The goal is technical perfection... The result is a series of lenses which have set the new world-standard of performance.

Each lens element is precisely polished and coated using Mamiya's proprietary multi-coating process to increase light transmission, dramatically reduce flare, ensure crisp, clean whites and vibrant, yet natural colors.

Mamiya engineers and inspectors test continuously as the lens is assembled to insure flawless quality. The result is a lens designed so carefully, built so meticulously, that it consistently renders extraordinary performance!

It is Mamiya's unique balance of extreme sharpness, brilliant contrast, accurate and consistent color fidelity and overall high performance that captures the imagination of contemporary photographers who choose Mamiya to express their personal visions.

Among today's community of world famous photographers, Mamiya lenses have established themselves as the new benchmark by which others are measured.